



Custom Rental Air Handling Unit 60 Hz/480 V



FEATURES

- Three units can be bolted into a 40-ft. ISO structure
- Units are stackable for shipping
- Washable filters
- Multiple air supply and return connections

SPECIFICATIONS

Model AH600
 Size — h x w x l 8' 6" x 8' x 13' 4"
 Usage Outdoor
 Electrical Data 480 volt/3 phase/60 hertz
 Total Full Load Amps
 Cooling Only 55 amps
 Heating Only 291 amps
 Cooling and Heating 291 amps
 Water Connections 4" victaulic
 Weight 10 500 lb (4767 kg)

ACCESSORIES

- Control panel
- Drain pan
- Variable frequency drive for fan

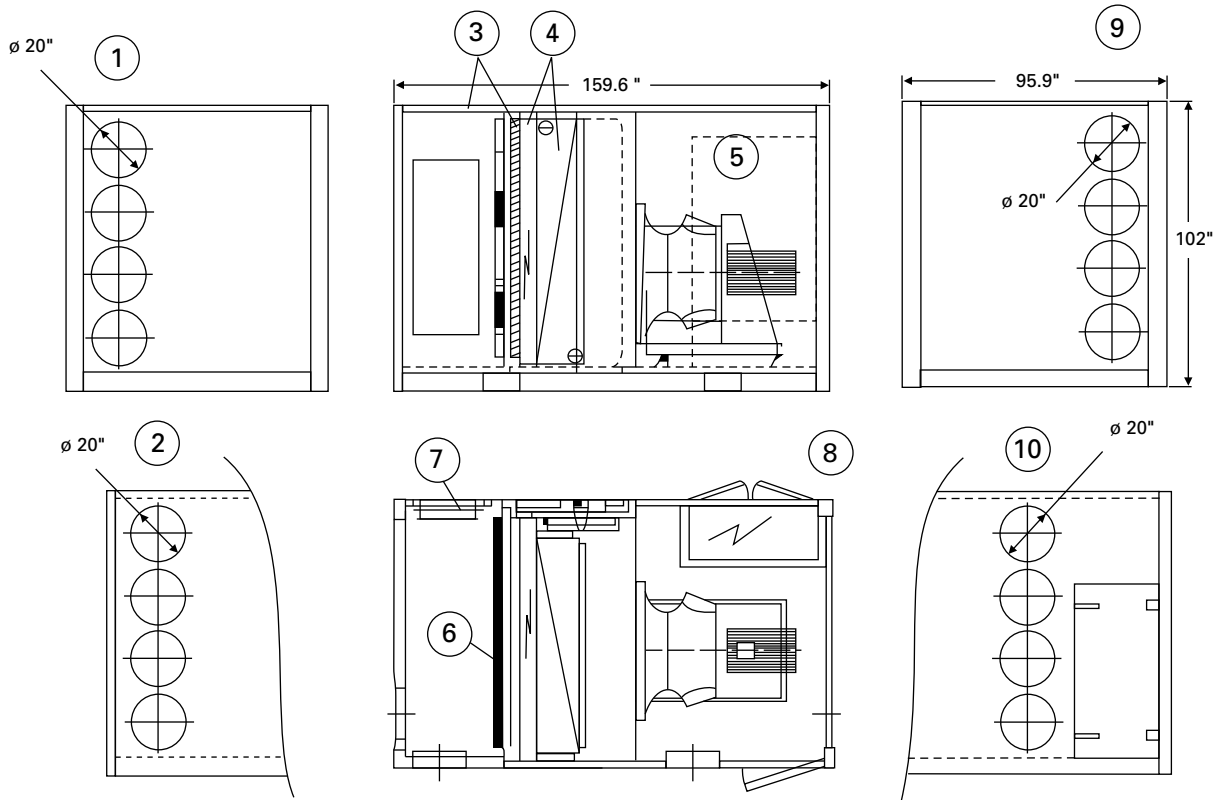


YORK INTERNATIONAL

TECHNICAL DATA

Fresh Air Inlet Damper type GHR	Yes Yes	Left opening 4'11" x 1'8"	Variable flow based on louver position
Return Air Inlet Collars	Yes Yes	(4) 20" dia. openings on each side & end	For each return air inlet Max. airflow = 10 000 cfm
Supply Air Outlet Collars	Yes Yes	(4) 20" dia. openings on each side & end	For each supply air Max. airflow = 10 000 cfm
Filters Supply air	Prefilter	Type Metallic filter	Efficiency EU 2 - G 2 - 73% grav.
Heating coil Enter/leave air temp. Min. airflow/max. airflow Overall capacity Screen shield	°F cfm kW Qty.	Electrical Delta T° air = 77° F (for airflow = 17 000 cfm) 18 000 cfm/30 000 cfm 196 kW/236 amps (5 steps of 39.2 kW) Yes (one to protect filter)	
Cooling coil Material Nominal air flow/max. Face velocity nom./max. Max. entering temp. for 53.6° F Nominal leaving air temp. Minimum leaving air temp. Overall capacity Maximum capacity Number of rows Fin spacing Enter/leave water temp. Nominal flow rate Water pressure drop Eliminator	Cu/Al cfm m/s °F/Hr% °F/Hr% °F/Hr% kW kW Qty. Fins/Ft °F gpm inWg Glasdeck	Yes 26 000/30 000 2.91/3.36 88.5° F 50% 26 000 cfm/85.6° F 50% 30 000 cfm 53.6° F 95% 50.9° F 100% 26 000 cfm/51.6° F 100% 30 000 cfm 525/525 554/573 8 102 42.8/53.6 330 80.4 Yes	
Fan Model Nominal air flow/max. External static pressure Total static pressure Fan speed Absorbed power Motor power Motor speed Electrical character	Plug fan cfm InWg InWg rpm kW kW rpm V/Ph/Hz	Supply ER 10F 4DN N7 1R 26 000/30 000 4.21 at 26 000 cfm/2.61 at 30 000 cfm 6.43 at 26 000 cfm/6.42 at 30 000 cfm 1408 (48 Hz)/1421 (49 Hz) (Maxi = 1450 rpm) 27 kW at 26 000 cfm/26 kW at 30 000 cfm 30 (nominal current 55 A) 1465 480/3/60	

DIMENSIONS



- ① Side Return Air Connections
- ② End Return Air Connections
- ③ Heating Element
- ④ Cooling Coil
- ⑤ Plug Fan
- ⑥ Filter Rack
- ⑦ Outside Air Louver
- ⑧ Control Enclosure
- ⑨ End Supply Air Connections
- ⑩ Side Supply Air Connections

Fan Sound Power	63	125	250	500	1000	2000	4000	8000
S.P. Level 26 000 cfm	94	99	92	93	90	90	86	84
S.P. Level 30 000 cfm	95	100	96	92	90	90	87	83

RATING CONDITIONS

Tonnage rated at ARI conditions: 95° F ambient, 80 DB/67 WB °F entering air temperature.

100 tons at ARI conditions.
150 tons utilizing 100% outside air.