



## RENTAL MODULE

### 50 Ton

Cat®/York® air cooled scroll chillers are self-contained and provide chilled water for outdoor rental air conditioning and process applications. Each unit includes: York air cooled hermetic scroll chiller with a weather-resistant microprocessor control center, water fittings, triple duty valves, and in-line water strainers, all mounted on a formed steel base frame that includes a heavy-duty safety wire mesh dipped in rust-protective coating for protection. This unit is then reinforced with an industrial rugged, rental ready, skid mounted framing for increased durability and strength. Units meet or exceed industry guidelines and third party safety and quality standards.

### TECHNICAL SPECIFICATIONS

Model .....	CH50
Dimensions — ft (m)	
Length .....	12' 2" (3.71)
Width .....	7' 4" (2.24)
Height .....	8' 3" (2.51)
Total shipping weight — lb (kg) .....	5,500 (2495)

Water connections — in (mm) .....	4 (102)
Single point power supply .....	460 Volt 3-phase 60 Hertz with ground
Running load amps (with pump) .....	114
Minimum circuit ampacity (with pump) .....	121

### FEATURES

#### COMPONENTS

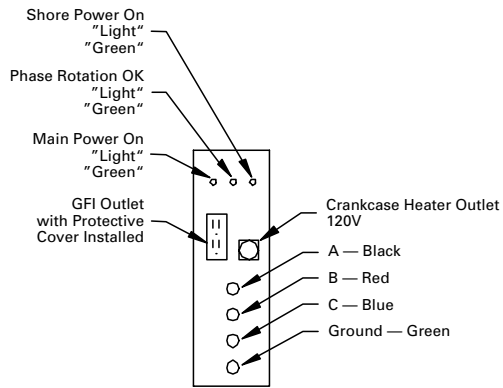
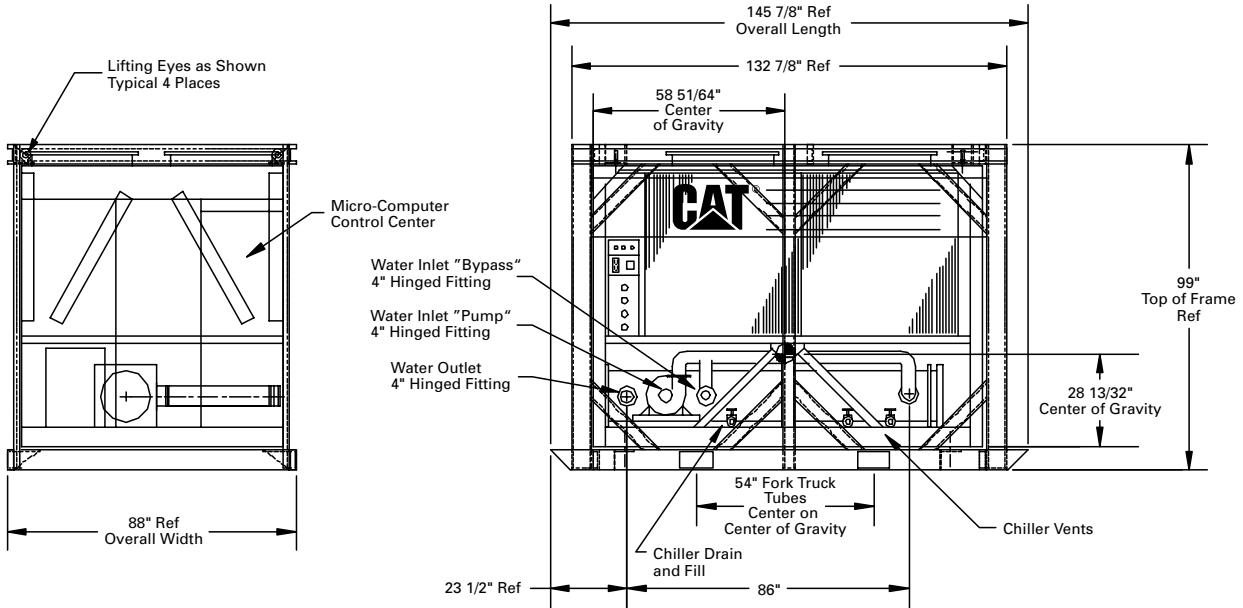
- York air cooled hermetic scroll chiller
  - Four (4) suction-gas cooled hermetic no-contact scroll design compressors utilizing floating tip seals
  - Evaporator equipped for freeze protection down to -20° F (-29° C) ambient.
  - Air cooled condenser coils design working pressure of the coil is 450 psig.
  - Controls housed in NEMA 3R/12 air/liquid-tight cabinet with LCD with back lighting for outdoor viewing. Forty characters in plain English terms with color-coded 12-button non-tactile keypad.
  - Provisions included for pumpdown at shutdown; unit alarm contacts standard. Operating program stored in non-volatile memory, eliminating chiller failure due to AC powered failure/battery discharge.
  - Included as standard: control transformer, Chicago code pressure relief valves, hot gas bypass, leaving brine temperature capabilities, rental applications flow switch rated at 150 psig design working pressure, welded wire mesh panels dipped in PVC coating.

- Black fin epoxy corrosion resistant condenser coating which protects in harsh industrial/saltwater environments (optional feature)
- One (1) 3 hp (2.2 kW) Bell & Gossett pump mounted internally to frame (optional feature)
  - Range 75 to 200 Gal/min (284 to 758 L/min) — 121 Gal/min (459 L/min) nominal at 50 feet (15.25 m) of head pressure providing system flexibility
- Infinite position butterfly valves to dial in the evaporator bypass loop
- Insulated water and suction lines to prevent condensation

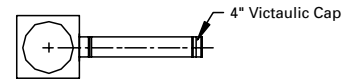
#### CONTROL/POWER CENTER

- One (1) 125 amp circuit breaker to isolate power voltage for servicing.
- NEMA rated motor starters for circulating pumps with manual HAND-OFF-AUTO controls for each pump
- Convenient 120 Volt outlet provides users a power supply right at the chiller.
- Power panels include: 3-light system to notify 460 Volt present, correct phase rotation, and available shore power. Compressor power terminals and motor starting contactors, fan contactors, and overload current protection. Power wiring routed through liquid tight conduit to compressors.

## DIMENSIONS



SHORE POWER CONNECTIONS



SIDE VIEW OF WATER OUTLET

Consult your Caterpillar representative for more details.

[www.CAT-ElectricPower.com](http://www.CAT-ElectricPower.com)

©2001 Caterpillar  
All rights reserved.  
Printed in U.S.A.